



Region Engineer

Telephone: 334-792-4149  
Facsimile: 334-677-1153  
Toll Free: 1-800-782-4149

## ROAD & BRIDGE DEPARTMENT

2400 Columbia Highway  
Dothan, Alabama 36303

26 August 2019

Mr. D. E. Phillips, Jr., P.E.  
County Transportation Engineer  
Alabama Department of Transportation  
1409 Coliseum Blvd.  
Montgomery, Alabama 36130

RE: STPOA-3519( 253), HCP35-405-19  
Resurface N Broad St & Omussee Rd  
CSX Railroad Crossing No. 637871V, MP AN 0776.93  
Houston County

Dear Sir,

CSX Railroad crosses N Broad Street within the limits of the above referenced project. The existing railroad crossing is in fair condition and is wide enough to accommodate the proposed typical section. The proposed pavement buildup will tie into the existing pavement on either side of the railroad track as close to the rail as feasible. Any work required between the rails will be the responsibility of CSX Railroad. Work performed within this project will consist of G-Treatment, leveling and resurfacing, along with the application markings and legends. It is estimated the contractor will have 4-6 days of work on the Railroad Right-of-Way.

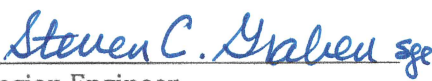
The railroad active warning devices, crossbucks and advanced warning signs are in place and in good condition. The traffic markings and legends are in place and will be replaced as part of this project.

The required Certification of Railroad Involvement and Railroad Crossing Warning Device Checklist accompany this summary of work. Also attached are a title sheet, project layout sheets, typical section, project detail and project note sheet.

Signed:

  
LPA Representative

Approved:

  
Region Engineer

STATE	REFERENCE PROJECT NO.	FISCAL YEAR	SHEET	LAST SHEET
AL	STPOA-3519(253)	2019	1	6

CONTRACT ID:  
Preliminary Project No.: HCP35-405-19  
Code No.: 4356-CSWA6-100023038

# ALABAMA

## DEPARTMENT OF TRANSPORTATION

### HOUSTON COUNTY

### PROJECT NO. STPOA-3519(253)

RESURFACE NORTH BROAD STREET AND OMSUSSEE ROAD  
FROM SR-12 (US 84) TO SR-52 (COLUMBIA HWY)

CSX RAILROAD CROSSING NO. 637871V



Design Designation	
ADT (2019).....	1521
ADT (2039).....	2305
K .....	
D .....	
TDHV .....	
TADT .....	12.0%
V ( Design Speed ) .....	45 mph
Min. Stopping Sight Dist. ....	305'

SUBMITTED FOR APPROVAL  
  
COUNTY ENGINEER

EXISTING BRIDGES/BRIDGE CULVERTS

N/A

EXCEPTIONS

N/A



ALABAMA DEPARTMENT OF TRANSPORTATION	
SUBMITTED FOR APPROVAL	
REGION ENGINEER	
COUNTY TRANSPORTATION ENGINEER	
CHIEF ENGINEER	
APPROVED:	
TRANSPORTATION DIRECTOR	

	N BROAD ST & OMSUSSEE RD	
	FT.	MI.
TOTAL STATIONING OF PROJECT	17508.00	
EQUATIONS AND EXCEPTIONS	0.00	
NET LENGTH OF PROJECT	17508.00	3.316
NET LENGTH OF BRIDGES	0.00	0.000
NET LENGTH OF ROADWAYS	17508.00	3.316



These plans have been prepared to conform with the Alabama Department of Transportation Standard Specifications for Highway Construction, 2018 Edition.

The bidder's attention is directed to Subarticle 102.08(b) contained in the 2018 Standard Specifications concerning combination bids.



REFERENCE PROJECT NO.

FISCAL YEAR

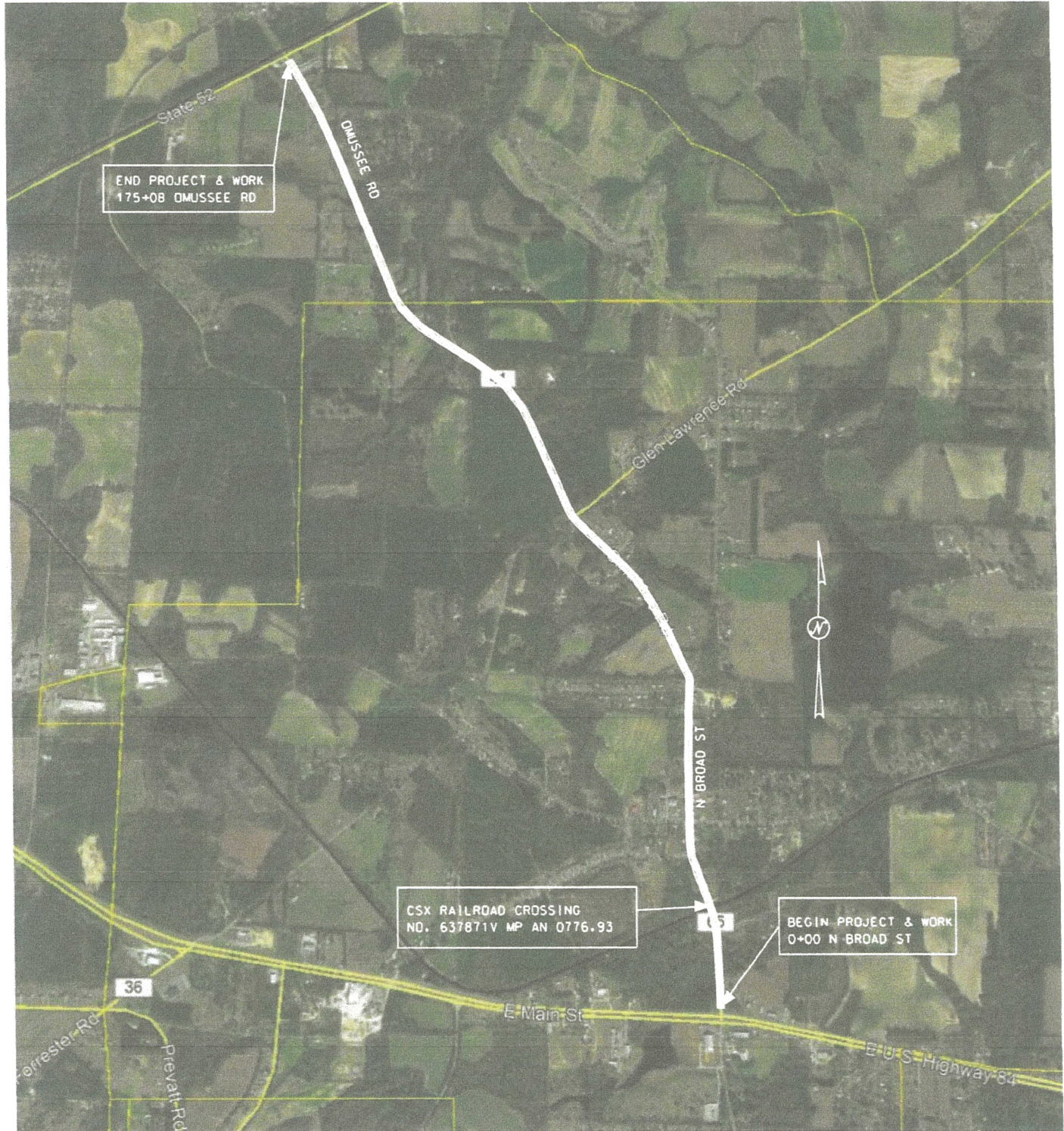
SHEET

STPOA-3519(253)

2019

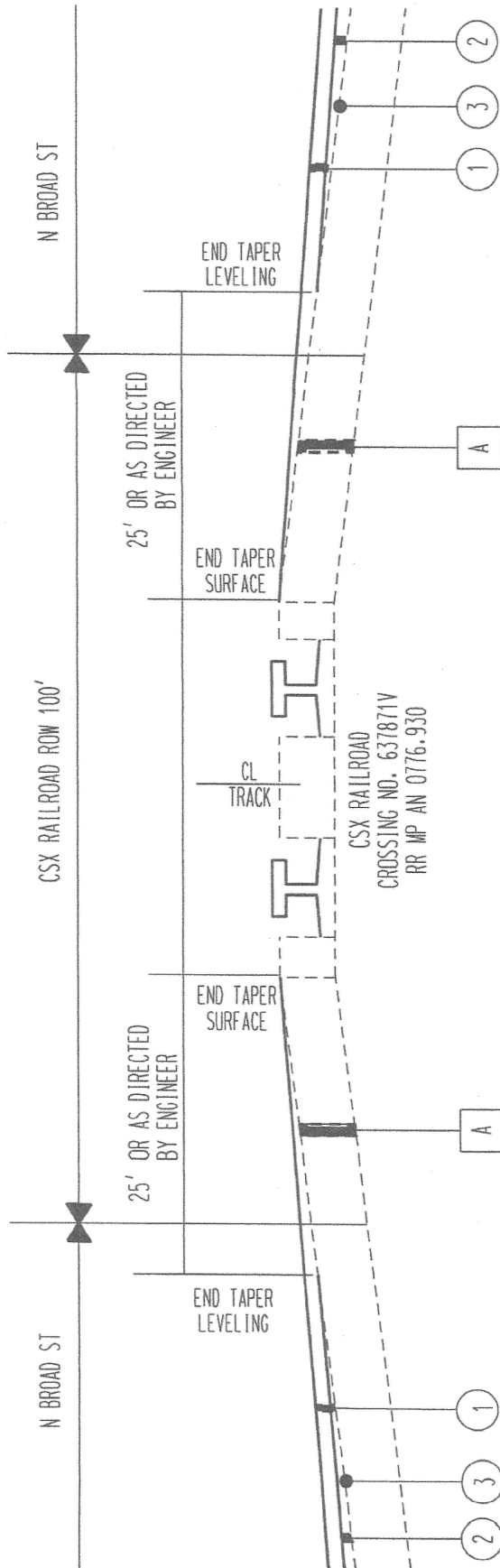
2

# PROJECT LAYOUT



# TYPICAL SECTION

## TRANSITION TAPER



1 REQ'D SUPERPAVE BITUMINOUS CONCRETE WEARING SURFACE LAYER, 1/2" MAX. AGGREGATE SIZE, ESAL RANGE A/B (150 LBS/SY) FULL WIDTH

2 REQ'D SUPERPAVE BITUMINOUS CONCRETE UPPER BINDER LAYER, LEVELING, 1/2" MAX. AGGREGATE SIZE, ESAL RANGE A/B (100 LBS/SY) FULL WIDTH

3 REQ'D BITUMINOUS TREATMENT G

A IN-PLACE PAVEMENT (RETAIN)

424A-340

424B-642

401A-006

A





## PROJECT NOTES

800. NO UTILITY CONFLICTS ARE INVOLVED IN THE CONSTRUCTION OF THIS PROJECT, HOWEVER THE CONTRACTOR SHALL BE RESPONSIBLE FOR CONTACTING ALL UTILITY OWNERS TO VERIFY EXACT LOCATIONS. THE CONTRACTOR SHALL BE LIABLE FOR ANY DAMAGE DUE TO HIS FAILURE TO PROPERLY LOCATE UTILITIES AND SHALL REPAIR ANY DAMAGES TO THE SATISFACTION OF THE UTILITY OWNERS AT THE CONTRACTOR'S EXPENSE.

UTILITY OWNERS:

ELECTRIC -	DOTHAN UTILITIES 200 KILGORE DR DOTHAN, AL. 36301 334-615-3000	WIREGRASS ELECTRIC 301 E MILL ST HARTFORD, AL. 36344 334-944-7139	ALABAMA POWER 20247 E THREE NOTCH ST ANDALUSIA, AL. 36420 334-
------------	---	--	---

COMMUNICATIONS -	WOW 2660 MONTGOMERY HWY DOTHAN, AL 36303 PHONE- 334-699-3333	WATER -	TOWN OF COWARTS 800 JESTER ST COWARTS, AL 36321 334-792-8920
------------------	---	---------	---

900. NPDES PERMIT COVERAGE IS IN PLACE FOR THIS PROJECT
901. THE CONTRACTOR SHALL NOTIFY CSX RAILROAD IN WRITING A MINIMUM OF 30 DAYS PRIOR TO ANY WORK PERFORMED ON THE RAILROAD'S RIGHT-OF-WAY
902. ALL PERSONS PERFORMING WORK ON OR OVER THE CSX'S TRACKS MUST COMPLY WITH THE RAILROAD'S SAFETY RULES
903. ALL WORK ON, OVER, UNDER, OR ADJACENT TO THE RAILROAD'S RIGHT-OF-WAY SHALL BE DONE IN ACCORDANCE WITH THE CSX RAILROAD'S SPECIAL PROVISIONS FOR THE PROTECTION OF RAILWAY INTERESTS.
904. MR. SCOTT WILLIS  
MANAGER, PUBLIC PROJECTS  
CSX TRANSPORTATION  
500 WATER STREET  
JACKSONVILLE, FL 32202  
(904)359-1405  
scott\_willis@csx.com



**ALABAMA DEPARTMENT OF TRANSPORTATION**  
Design Bureau Traffic & Safety Operations

**Railroad Crossing Warning Device Checklist for  
Construction Projects with Railroad Involvement**

The following checklist is a guide to determine the condition and compliance of existing rail-highway traffic control devices or crossings when a crossing is located within or near the terminus of a project. This checklist is developed in accordance to the regulations listed in Title 23 CFR 646.214 (b)(3)(i), MUTCD, other Federal and State guidelines. The included MUTCD references are provided in this checklist for quick reference, reference Part 8 of the current MUTCD guide for additional information, detail, and options.

\*REQUIRED

<b>*PROJECT NUMBER</b> STPOA-3519(253), HCP35-405-19		<b>*DATE SUBMITTED</b> 8/5/2019	
<b>*STREET/ROAD NAME (INCLUDE COUNTY/STATE/U.S. ROUTE)</b> N BROAD ST & OMUSSEE RD		<b>*CROSSING INVENTORY NUMBER (i.e. 123456A)</b> 637871V	
<b>*COUNTY</b> HOUSTON	<b>CITY/TOWN (IN OR NEAR)</b> COWARTS/DOTHAN	<b>LETTING DATE</b> 3/27/2020	
	<b>POSTED HIGHWAY SPEED (MPH)</b> 30	<b>*ANNUAL AVERAGE DAILY TRAFFIC (AADT) &amp; YEAR</b> 1521 (2019)	
<b>*SCOPE OF WORK AT CROSSING:</b> Leveling & resurfacing roadway to tie into a smooth transition with railroad crossing tracks			
<b>KNOWN IMPACTS TO COMMUNITY i.e. RESIDENTIAL OR COMMERCIAL DEVELOPMENT, EMERGENCY VEHICLE ACCESS ROUTE, HAZARD MATERIAL ROUTE, SCHOOL BUS ROUTE, BLOCKED CROSSING, HUMPED CROSSING, ETC. (IF APPLICABLE, PROVIDE DOCUMENTATION):</b> This route is used by emergency vehicles and school busses. The area around crossing is residential.			
<b>CLASSIFICATION INFORMATION</b>			
<b>*CROSSING TYPE</b> Public	<b>*CROSSING PURPOSE</b> HIGHWAY	<b>*CROSSING POSITION</b> AT-GRADE	<b>TYPE OF LAND USED</b> RESIDENTIAL
<b>*NUMBER OF TRAFFIC LANES</b> CROSSING RAILROAD 2 TWO-WAY TRAFFIC	<b>*HIGHWAY SYSTEM</b> FEDERAL AID, NOT NHS	<b>*FUNCTIONAL CLASSIFICATION OF ROAD AT CROSSING</b> RURAL MAJOR COLLECTOR	
<b>*EMERGENCY SERVICE ROUTE</b> YES	<b>*SCHOOL BUS ROUTE</b> YES	<b>*TRANSIT BUS ROUTE</b> NO	<b>*ESTIMATED PERCENT TRUCKS</b> 7%
<b>SMALLEST CROSSING ANGLE</b> 60° – 90°	1. Is Roadway/Pathway Paved? <b>Yes</b> 2. Does Track Run Down a Street? <b>No</b> 3. Is Crossing Illuminated? ( <i>Lights within approx. 50 feet from nearest rail</i> ) <b>No</b> 4. Intersecting Roadway within 500 feet? Approx. distance (feet) 420 5. Is there an adjacent crossing with a separate number? DOT No(s). <b>NO</b>		

**Railroad Crossing Warning Device Checklist for  
Construction Projects with Railroad Involvement**

<b>EXISTING CROSSING EQUIPMENT AND SITE CONDITIONS (PASSIVE WARNING DEVICES)</b>		
<i>(Specify the count of each device for all that apply i.e. Count or ___)</i>		
<b>*ADVANCE WARNING SIGNS</b>		
APPROACH	SIGN	CONDITION
All Approaches	W10-1	Great (Meets Standards, No Action Required)
Choose an item.	Choose an item.	Choose an item.
Choose an item.	Choose an item.	Choose an item.
Choose an item.	Choose an item.	Choose an item.
Choose an item.	Choose an item.	Choose an item.
Choose an item.	Choose an item.	Choose an item.
<b>*PAVEMENT MARKINGS</b>		
APPROACH	TYPE	CONDITION
All Approaches	Stop Lines	Meets Standard, Replace During Construction
All Approaches	RR Xing Symbols	Meets Standard, Replace During Construction
Choose an item.	Choose an item.	Choose an item.
Choose an item.	Choose an item.	Choose an item.
<b>CHANNELIZATION DEVICES/MEDIANS</b>		
APPROACH	DEVICE	CONDITION
All Approaches	None	Choose an item.
Choose an item.	Choose an item.	Choose an item.
Choose an item.	Choose an item.	Choose an item.
Choose an item.	Choose an item.	Choose an item.
<b>*PASSIVE TRAFFIC CONTROL DEVICES</b>		
APPROACH	DEVICE	CONDITION
All Approaches	Other MUTCD Sign: Specify Type <u>W14-3</u>	Great (Meets Standards, No Action Required)
Choose an item.	Choose an item.	Choose an item.
Choose an item.	Choose an item.	Choose an item.
Choose an item.	Choose an item.	Choose an item.
Choose an item.	Choose an item.	Choose an item.
Choose an item.	Choose an item.	Choose an item.
<b>EXISTING CROSSING EQUIPMENT AND SITE CONDITIONS (ACTIVE WARNING DEVICES)</b>		
APPROACH	DEVICE	CONDITION
All Approaches Choose an item.	Gate Arms: Roadway Gate Arms: Roadway	Great (Meets Standards, No Action Required) Great (Meets Standards, No Action Required)
Choose an item.	Gate Configuration: 2 Quad	Great (Meets Standards, No Action Required)
All Approaches Choose an item.	Mast Mounted Flashing Lights <sup>2</sup> Incandescent Back Light Included Mast Mounted Flashing Lights _____ Choose an item. Choose an item.	Great (Meets Standards, No Action Required)  Choose an item.



